

## Mortise Lock

### DL Series

#### 1 Tools Required



Pencil



Hammer



3/4" Chisel



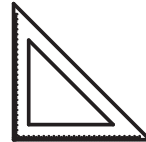
Drilling machine & heads



Phillips screwdriver



Tape measure



Combination square



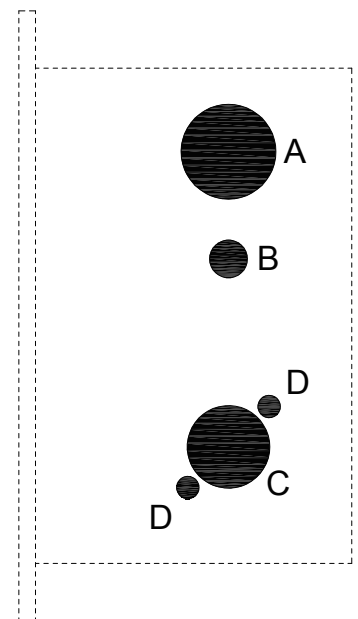
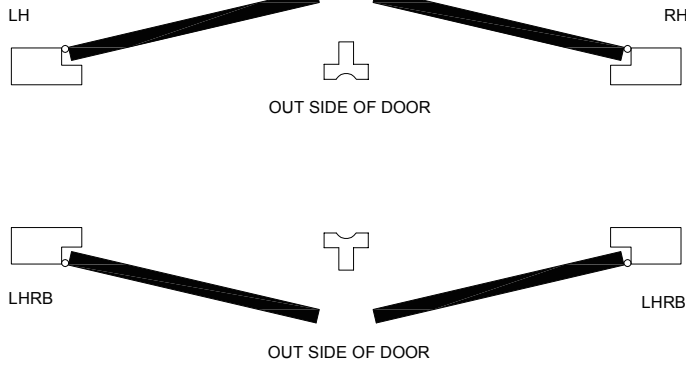
Internal allen wrench

#### 2 Drilling Holes Options

Series \ Positions	DL01		DL04		DL05/DL07		DL17		DL18		DL13/DL20/DL21		DL22	
	INSIDE	OUTSIDE	INSIDE	OUTSIDE	INSIDE	OUTSIDE	INSIDE	OUTSIDE	INSIDE	OUTSIDE	INSIDE	OUTSIDE	INSIDE	OUTSIDE
A (CYLINDER HOLE)				■		■		■		■		■		
B (TURN KNOB HOLE)			■				■				■		■	■
C (LEVER HOLE)	■	■	■	■	■	■					■	■	■	■
D (THRU HOLE)	■	■	■	■	■	■					■	■	■	■

- Note:
1. Door thickness must be thicker than 45mm(1-3/4") not exceeding 57mm(2-1/4")
  2. Must check the type of the lock first and then make the correct drilling
  3. Check the type of the lock according to table above then decide drilling or not.

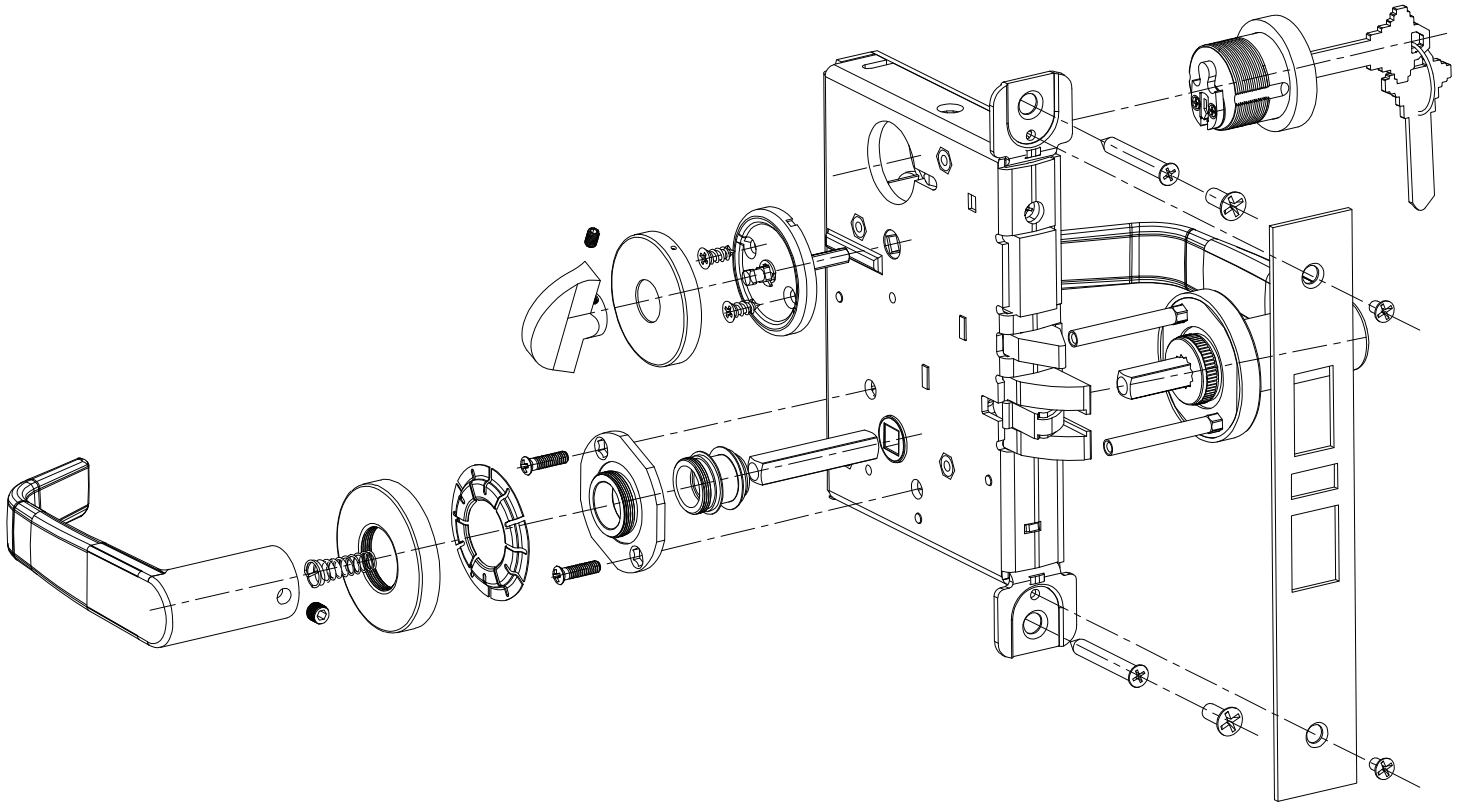
Door opening direction:



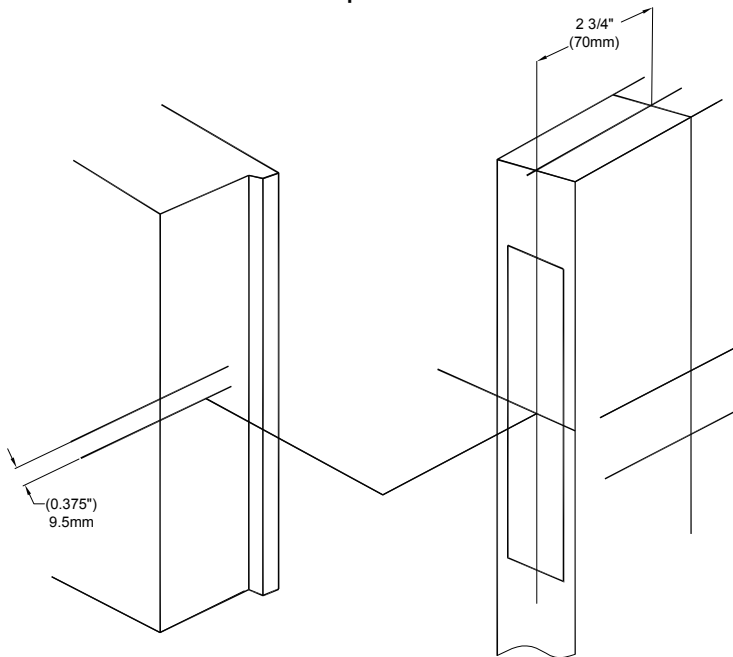
## Installation Instructions

### 3 Installation

#### 3D Explosive View



#### 1. Draw lines to fix the position

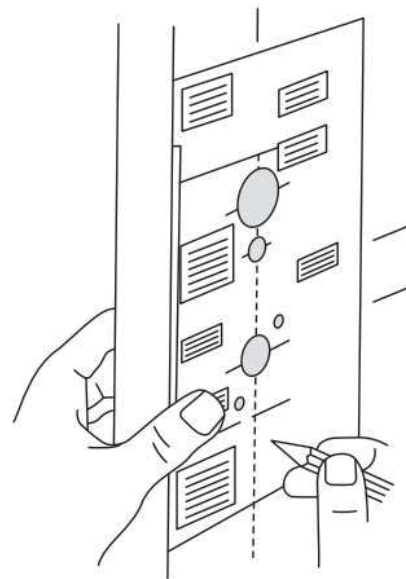


Note: Check the Door conforming to ANSI A1151.1

1. Draw center line to fix the installation height. Make sure the distances of two edges to the center are equal.
2. Draw center lines of cylinder, lever and thumbturn holes to determine the position of levers.
3. Draw center line above 9.5mm(0.375 . ") of the Cylinder center.

#### 2. Installation Template Guide

1. Fold Attached Installation Template
2. Put it on the door mark locks and holes positions



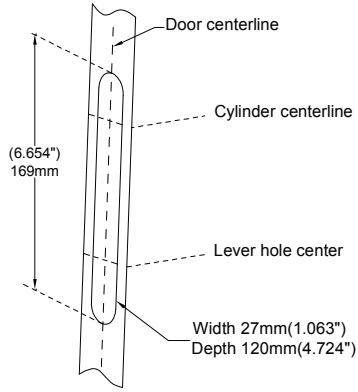
Note: Check carefully if it is Through or blind hole before drilling

### Installation Instructions

#### 3 Installation (cont.)

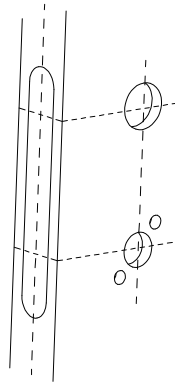
##### 3. Clean door pocket

Check template to clean door pocket:  
 169(6.654")X27(1.063")X120(4.724")  
 Length Width Depth



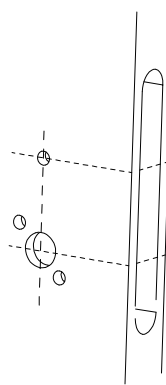
##### 4. Drill outside holes

Note: Check Thru hole or blind hole before drilling.



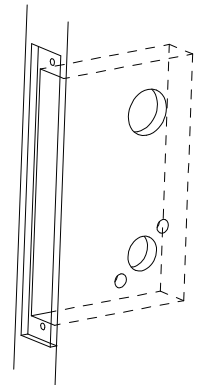
##### 5. Drill inside holes

Note: Check Thru hole or blind hole before drilling.



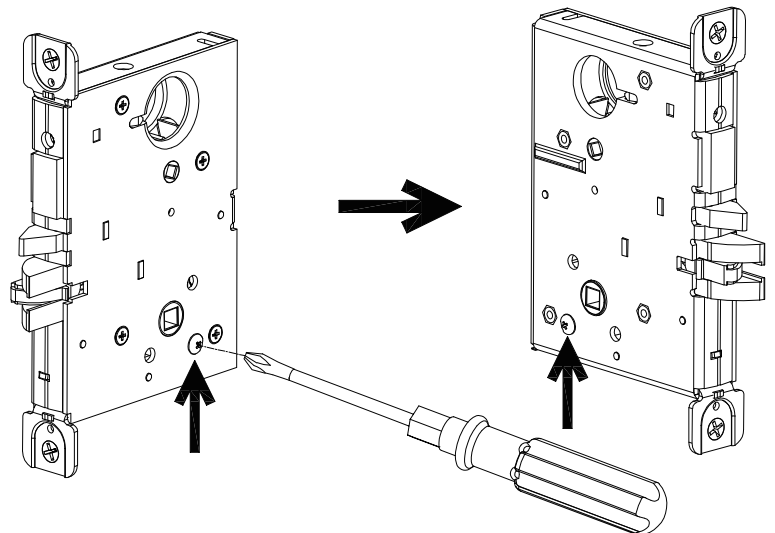
##### 6. Chisel square groove on front plate

32mm(1.260") X  
 203.4mm(8.008") X 5.5mm(7/32")



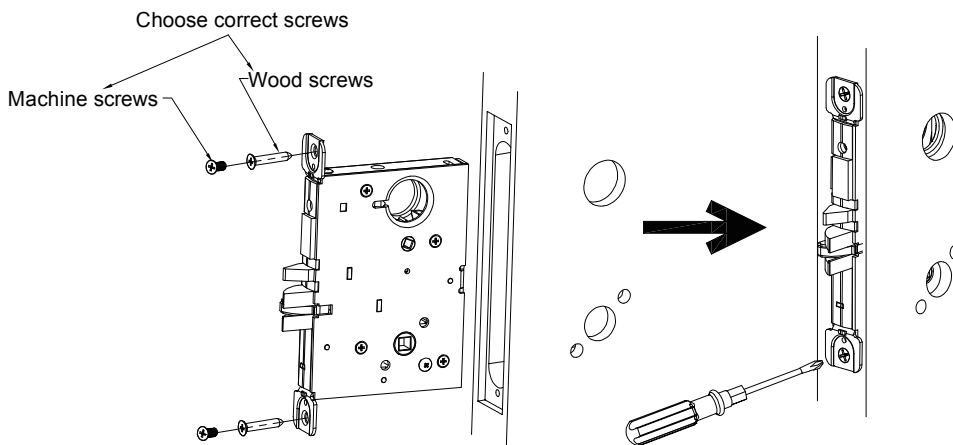
##### 7. Inside/Outside Lever Change (If needed)

1. Screw off the limit screw by philips screwdriver.
2. Screw the limit screw into the opposite hole as shown below.
3. Tighten the screw enough to make sure the direction has been changed.



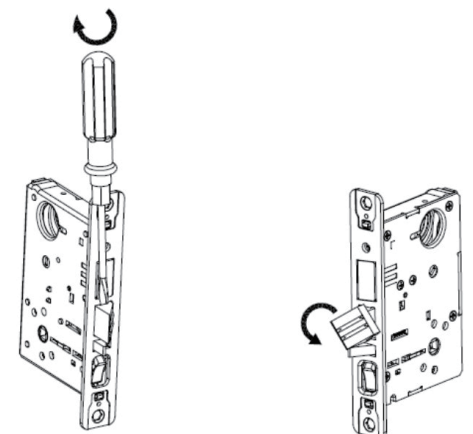
##### 8. Lockbody installation

1. Remove decorative front plate.
2. Put the lockbody into door pocket.
3. Make sure it is plumb between lockbody and door opening. Then tighten the screws.



##### 9. Adjust the direction of latch bolt

- a. Change latchbolt orientation according to direction of closing.
- b. Insert the straight screwdriver to the groove of latchbolt upper end, pry up the latchbolt above the faceplate, rotate latchbolt 180°.



## Installation Instructions

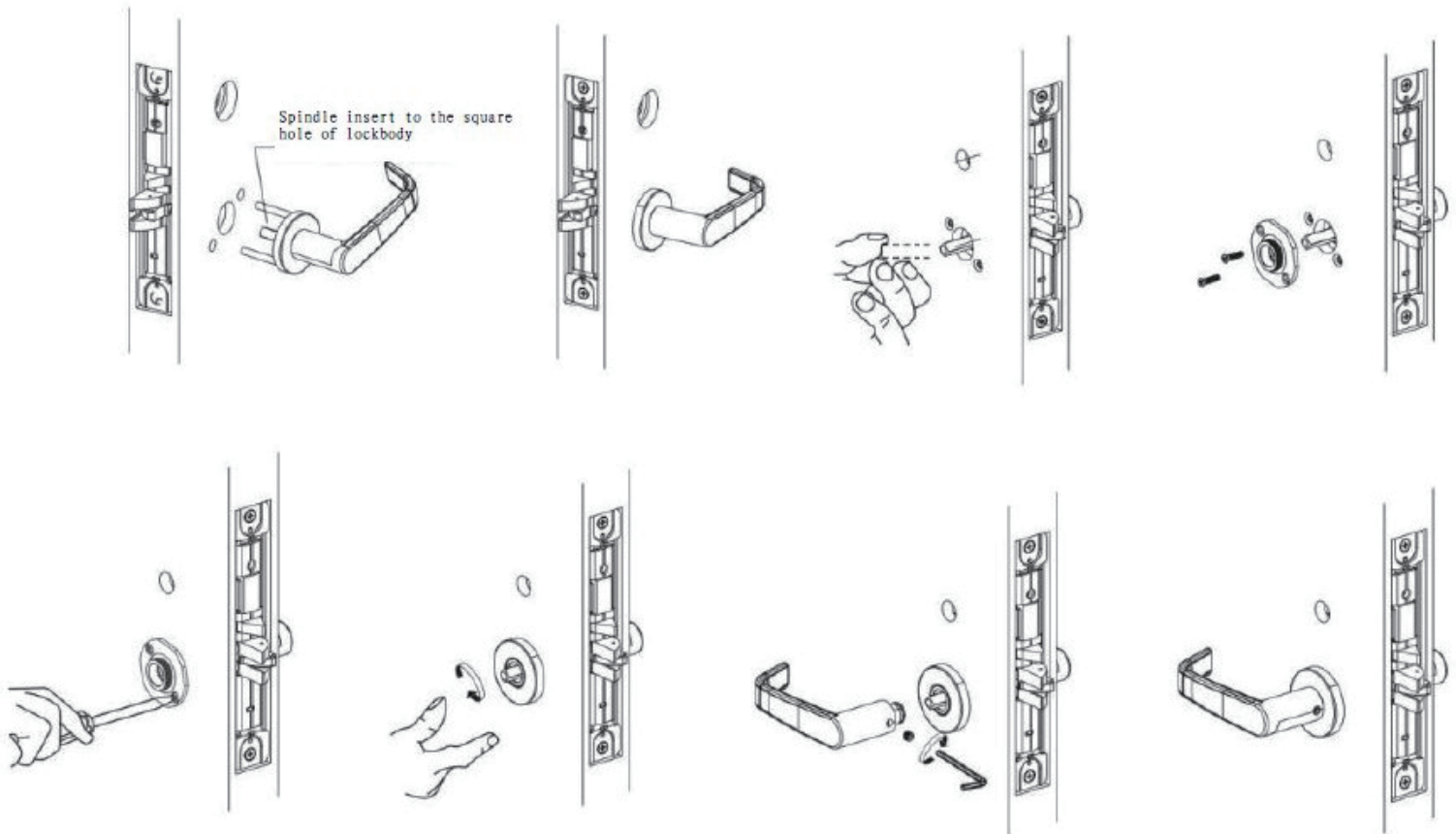
### 3 Installation (cont.)

#### 10. Lever installation

1. Slide spindle into lockbody hub.
2. Slide adapter & plate assembly over spindle & secure with two screws.
3. Screw rose firmly onto adapter & plate assembly.
4. Attach inside lever and secure with Allen wrench. Verify Lock is operating correctly.

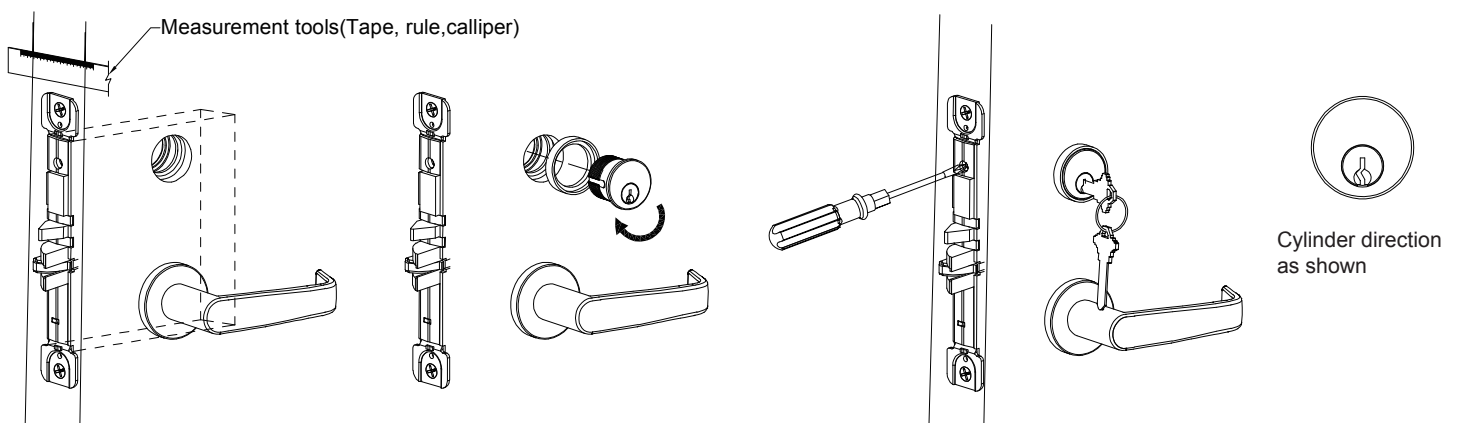
#### Note

- Select different types of screws and washers according to door thickness
1. Door thickness 45-50mm, #8-32\*7/8" screw.
  2. Door thickness 50-57mm, #8-32\*1-1/4" screw.



#### 11. Cylinder installation

1. Measure the door thickness (Normal door thickness 1-3/4"—2-1/4")
2. Choose the cylinder washer based on door thickness (Door thickness 45-50mm, 8mm washer. Door thickness 50-57mm, 5mm washer)
3. Slide cylinder through collar and thread into lock until cylinder face is near flush or exactly flush with collar.
4. Tighten cylinder clamp screw.
5. Check for proper lock operations by using keys. Make sure key hole direction is correct.

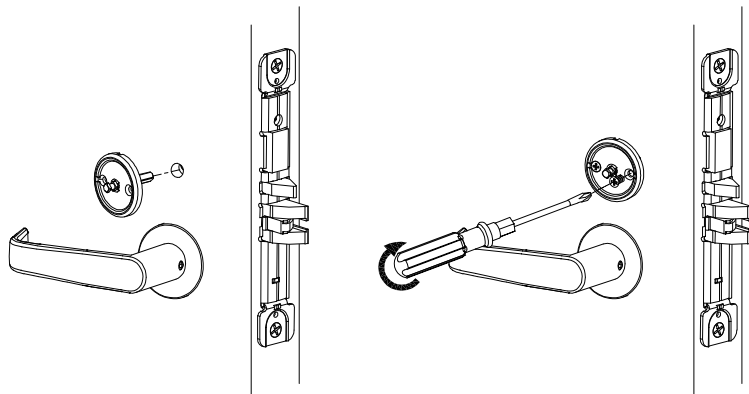


### Installation Instructions

#### 3 Installation (cont.)

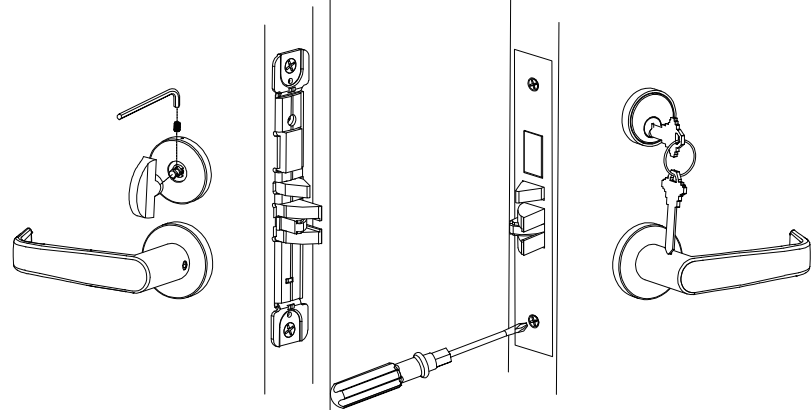
##### 11. Thumbturn installation

1. Install spindle of thumbturn into lockbody hole.
2. Tightening the screws to the door.
3. Insert the thumbturn and secure with Allen wrench.



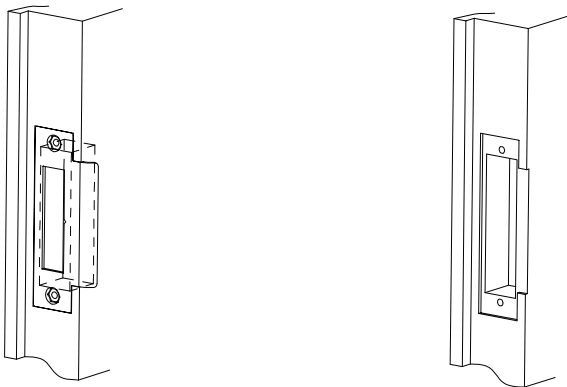
##### 12. Install the front plate back

- Put the decorative plate back and tighten the two screws.



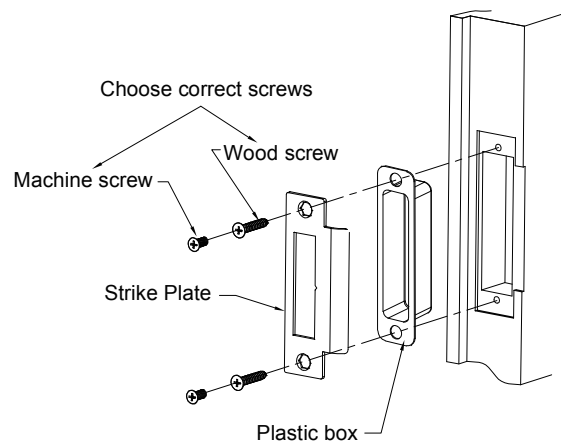
##### 13. Grooving of strike plate

1. According to the template position to groove rectangular hole for latch bolt 95X24X28.5mm (3 3/4"X0.945"X1 1/8").
2. According to the template position to groove rectangular hole for strike plate, dimension: 124X32X3.4mm(4.882" X1.25"X 0.134" ).



##### 14. Install strike plate and its plastic box

1. Make sure the depth of the groove is enough for the projection.
2. Make sure all the bolts (latch, dead and auxiliary bolts) can be projected completely when the door closed.
3. Make sure latch bolt is stuck by auxiliary bolt when the door closed.

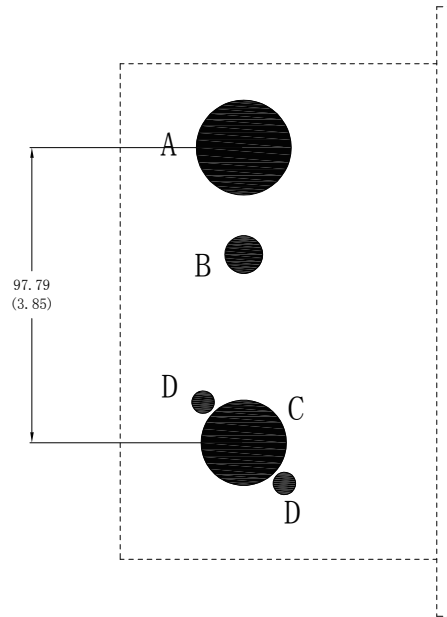


# Installation Instructions

## 3 Installation (cont.)

### 15. Select, draw lines and drilling

1. Choose correct holes to drill according to functions and the marked holes
2. Attach the installation template to the edge of door draw the center line between lever and cylinder hole
3. According to edge of door and centerline of the template attach the correct template to two sides of the door
4. Drill the holes at the right positions
5. After drilling Please check if the holes are correct referring to installation instruction of GL series



The functions and marked holes mapping tables

Series \ Positions	DL01		DL04		DL05/DL07		DL17		DL18		DL13/DL20/DL21		DL22	
	INSIDE	OUTSIDE	INSIDE	OUTSIDE	INSIDE	OUTSIDE	INSIDE	OUTSIDE	INSIDE	OUTSIDE	INSIDE	OUTSIDE	INSIDE	OUTSIDE
A (CYLINDER HOLE)				■		■		■		■		■		
B (TURN KNOB HOLE)			■				■				■		■	■
C (LEVER HOLE)	■	■	■	■	■	■					■	■	■	■
D (THRU HOLE)	■	■	■	■	■	■					■	■	■	■

**Note:**

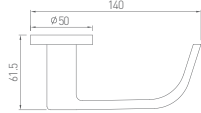
1. Door thickness must be thicker than 45mm(1-3/4") not exceeding 57mm(2-1/4")
2. Must check the type of the lock first and then make the correct drilling
3. Check the type of the lock according to table above then decide drilling or not.

### Installation Instructions

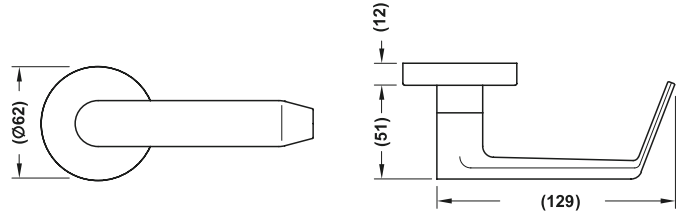
#### 4 Lever Handle Options



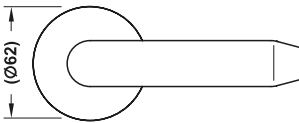
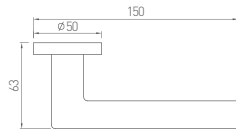
LE01 Solid SS304



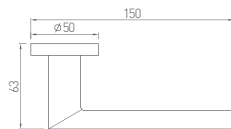
SL01 Solid SS304



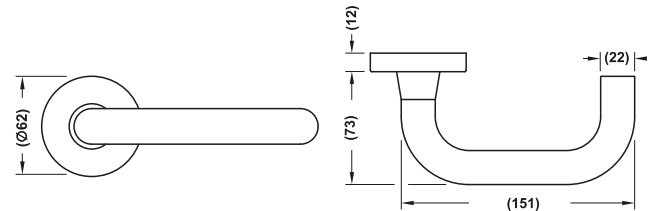
LE02 Solid SS304



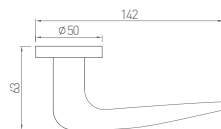
LE03 Solid SS304



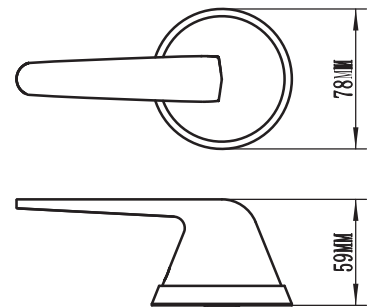
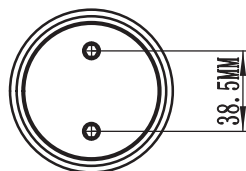
SL02 Solid SS304



LE04 Solid SS304



SL04 Solid SS304



SL05 Solid SS304

