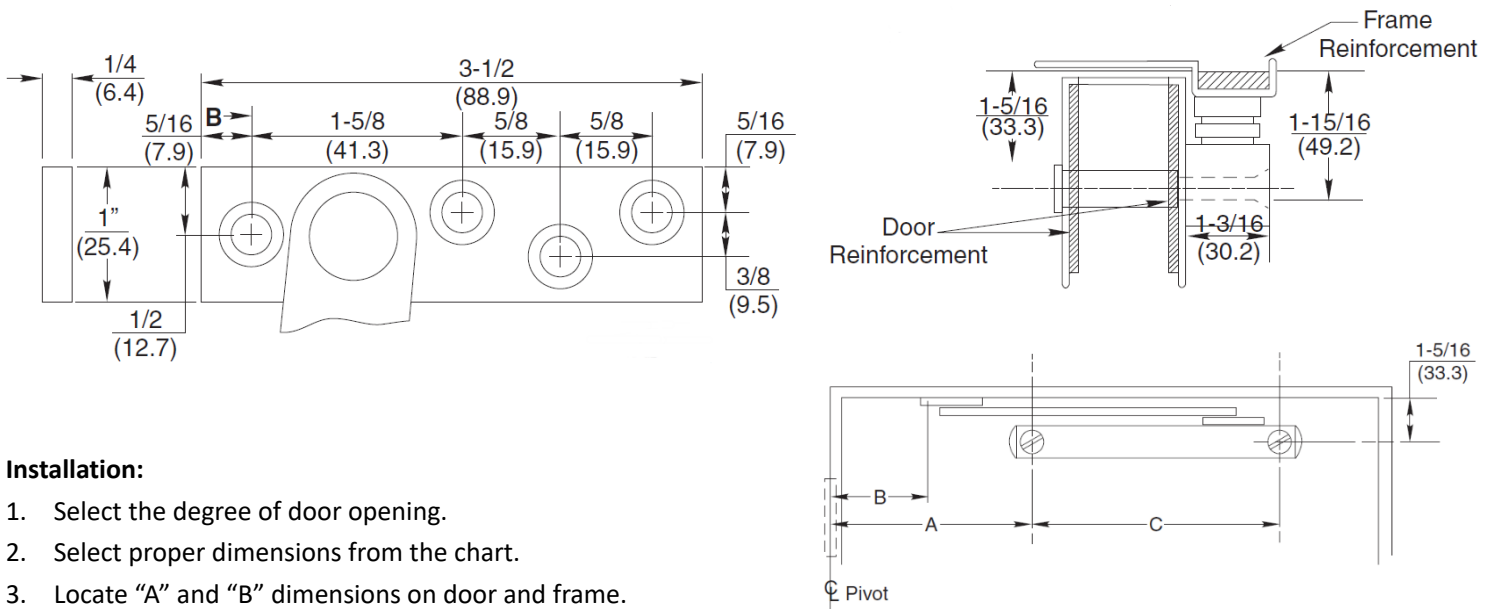
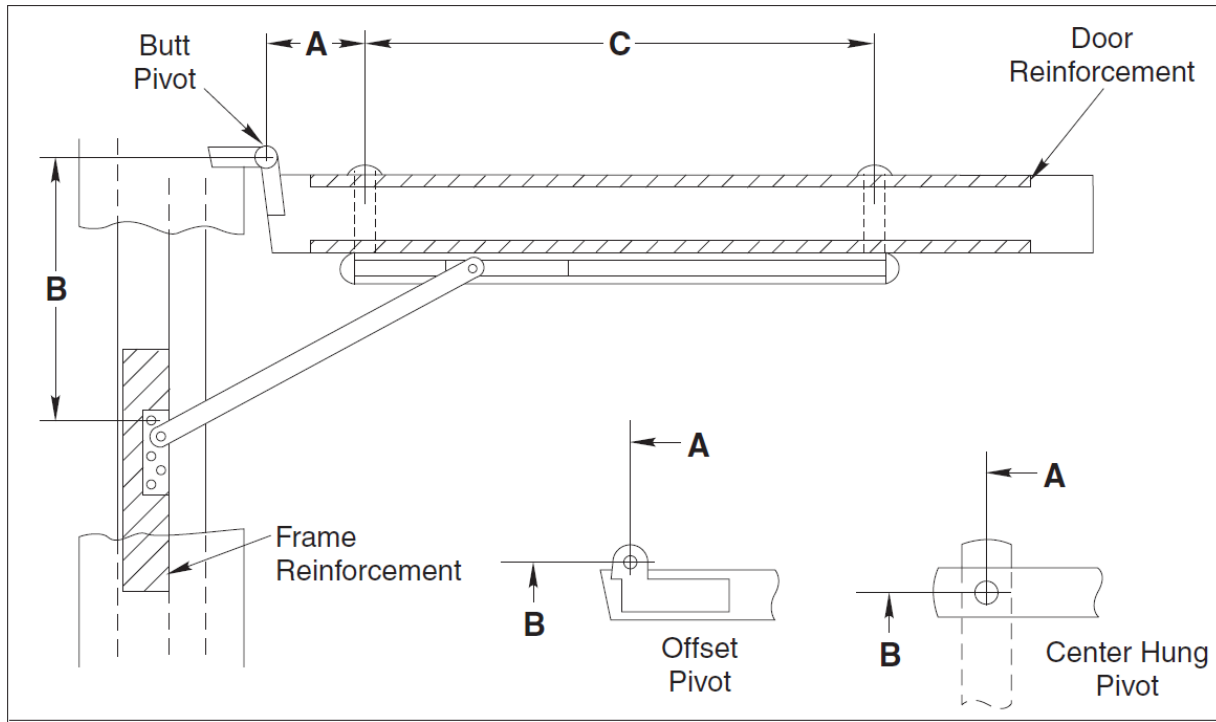


OVS900X Heavy duty surface mount Overhead stop



Installation:

1. Select the degree of door opening.
2. Select proper dimensions from the chart.
3. Locate "A" and "B" dimensions on door and frame.
4. Install jamb bracket on stop strip as shown.
5. Position channel on door with shock end located towards pivot. Drill 1/2 dia. sex bolt hole, "A" dimension 1-5/16 down from stop strip as shown.
6. Install channel on door with "A" dimension sex bolt. Locate "C" dimension sex bolt hole making sure that channel is horizontal and parallel with stop strip. Drill 1/2 dia. sex bolt hole and finish installing holder.

Notes:

1. All hollow metal frames should be properly reinforced with 3/16 min thickness \times 12" min. length reinforcement plates.
2. All hollow metal doors should be reinforced with 2-1/2 wide \times 3/16 min. thick \times full width of door reinforcement plates.
3. All drilling and tapping to be done by filed men.
4. Suggest mounting door stop or holder first and then other hardware to clear.
5. A, B and C dimensions are measured from center line of pivot, not edge of door.
6. All dimensions are given in inches.
7. Left hand shown – right hand opposite. (Note hole pattern in jamb bracket)

Dimensions—OVS900X									
Hinge	Model	Door opening	90°		100°		110°		C
			A	B	A	B	A	B	
$1\frac{3}{4}\sim 2\frac{1}{4}$ Butts & $\frac{3}{4}$ Offset Pivot	OVS9001	24~28	$5\frac{7}{8}$	$4\frac{3}{8}$	$5\frac{5}{16}$	$3\frac{13}{16}$	---	---	$15\frac{15}{16}$
	OVS9002	$28\frac{1}{16}\sim 33$	$7\frac{11}{16}$	$5\frac{7}{16}$	$7\frac{1}{16}$	$4\frac{13}{16}$	$6\frac{9}{16}$	$4\frac{5}{16}$	$17\frac{3}{16}$
	OVS9003	$33\frac{1}{16}\sim 38$	$11\frac{1}{4}$	$6\frac{3}{4}$	$10\frac{7}{16}$	$5\frac{15}{16}$	$9\frac{7}{8}$	$5\frac{3}{8}$	$18\frac{11}{16}$
	OVS9004	$36\frac{1}{16}\sim 43$	$14\frac{1}{8}$	$8\frac{1}{2}$	$13\frac{3}{16}$	$7\frac{9}{16}$	$12\frac{1}{2}$	$6\frac{7}{8}$	$20\frac{13}{16}$
	OVS9005	$43\frac{1}{16}\sim 48$	$17\frac{5}{8}$	$9\frac{3}{4}$	$16\frac{1}{2}$	$8\frac{5}{8}$	$15\frac{11}{16}$	$7\frac{13}{16}$	$22\frac{5}{16}$
$1\frac{3}{4}\sim 2\frac{1}{4}$ Center Hung	OVS9001	$25\frac{1}{2}\sim 30$	$5\frac{13}{16}$	$4\frac{15}{16}$	$5\frac{5}{16}$	$3\frac{3}{16}$	---	---	$15\frac{15}{16}$
	OVS9002	$30\frac{1}{16}\sim 36$	$7\frac{1}{2}$	$5\frac{3}{4}$	$7\frac{1}{8}$	$4\frac{13}{16}$	$6\frac{9}{16}$	$4\frac{5}{16}$	$17\frac{3}{16}$
	OVS9003	$36\frac{1}{16}\sim 41$	$10\frac{15}{16}$	$7\frac{1}{16}$	$10\frac{7}{16}$	$5\frac{15}{16}$	$9\frac{7}{8}$	$5\frac{3}{8}$	$18\frac{11}{16}$
	OVS9004	$41\frac{1}{16}\sim 46$	$13\frac{11}{16}$	$8\frac{11}{16}$	$13\frac{3}{16}$	$7\frac{9}{16}$	$12\frac{1}{2}$	$6\frac{7}{8}$	$20\frac{13}{16}$
	OVS9005	$46\frac{1}{16}\sim 50$	$17\frac{1}{8}$	$9\frac{7}{8}$	$16\frac{1}{2}$	$8\frac{5}{8}$	$15\frac{11}{16}$	$7\frac{13}{16}$	$22\frac{5}{16}$