

>>>

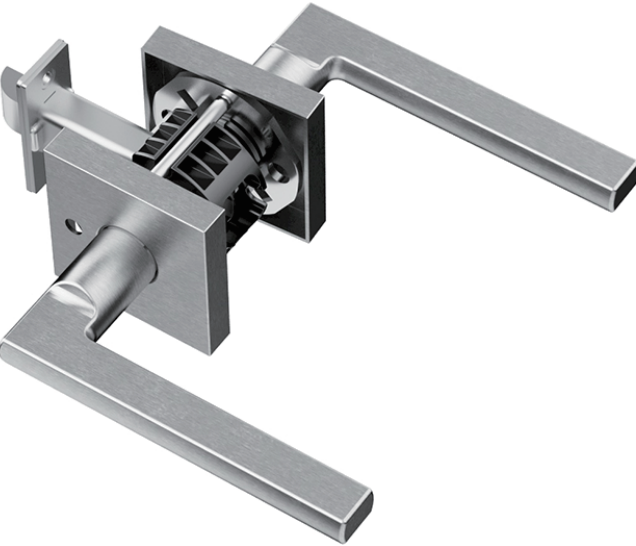
>>>Auxiliary Lock

>>>

Hardwood Door Control Tech (Ningbo) Co., Ltd.

Email: sales@hardwooddesignstudio.com
Telephone: +86-83861713
Cellphone: +86-18167213711
www.hardwooddesignstudio.com
Ningbo China

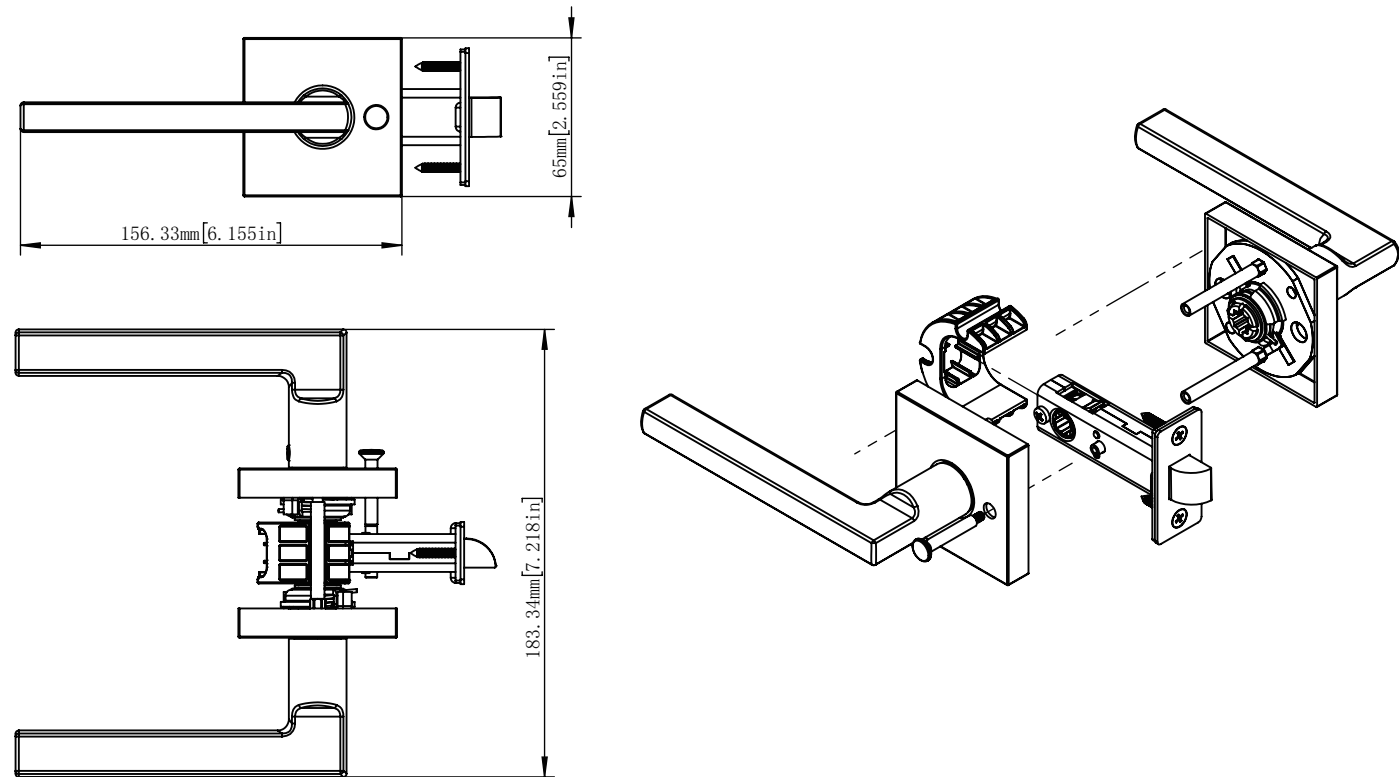




Features

- Anti-bacterial material SS316
- Non-handed
- Keyless design
- Easy to install
- Passage and Privacy function options

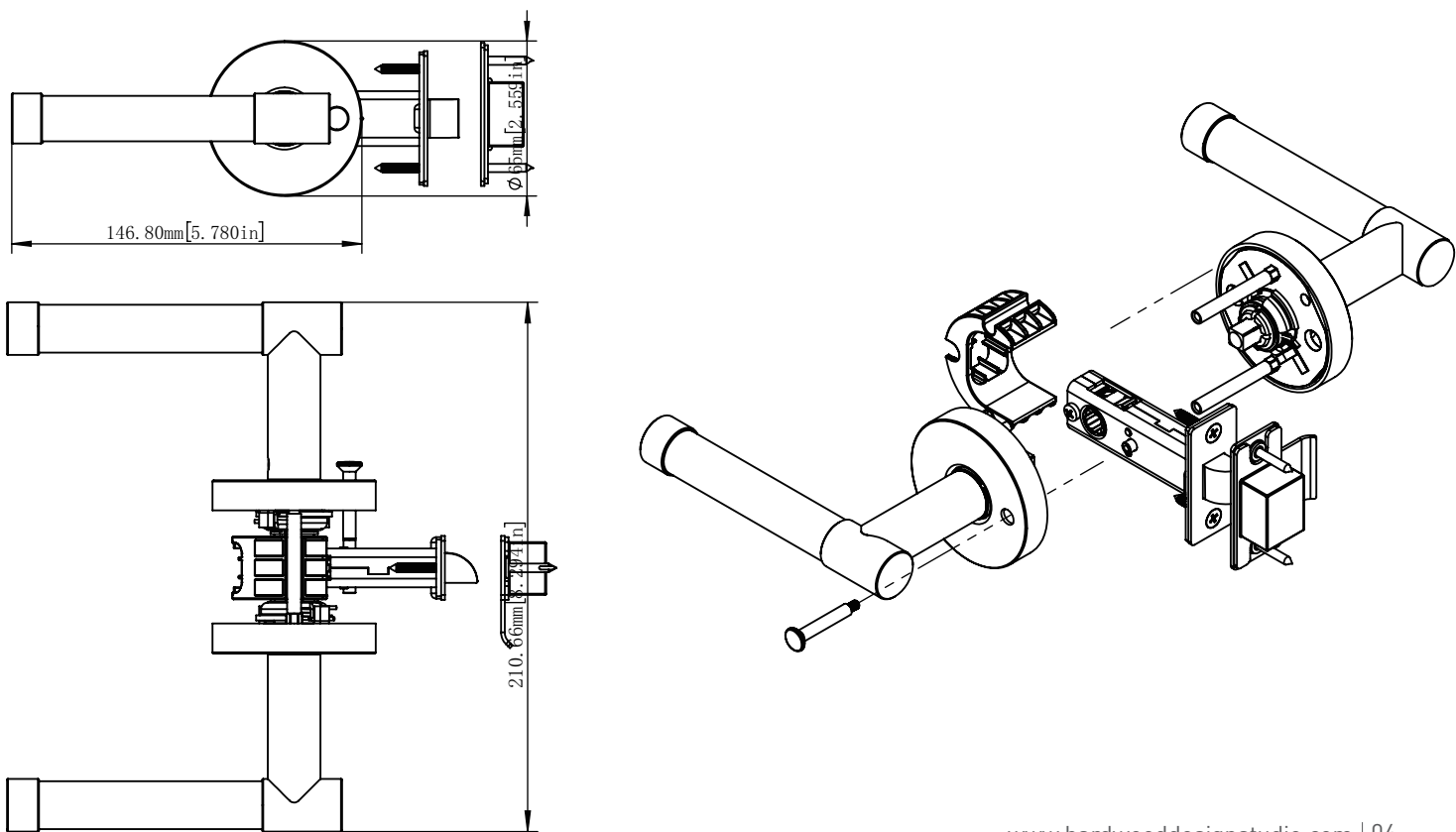
| | |
|-----------------|--|
| Part No.# | AL-01 |
| Material | SS316 |
| Finishes | Available in standard architectural finishes |
| Backset Depth | 2 3/8" - 2 3/4" |
| Door Thickness | 1 3/8" - 1 3/4" |
| Handing | Non-handed |
| Latchbolt Throw | 1/2" |
| Number of Keys | 0 |
| Strike Type | T-Strike Curved Lip |
| UL Listed | Yes |

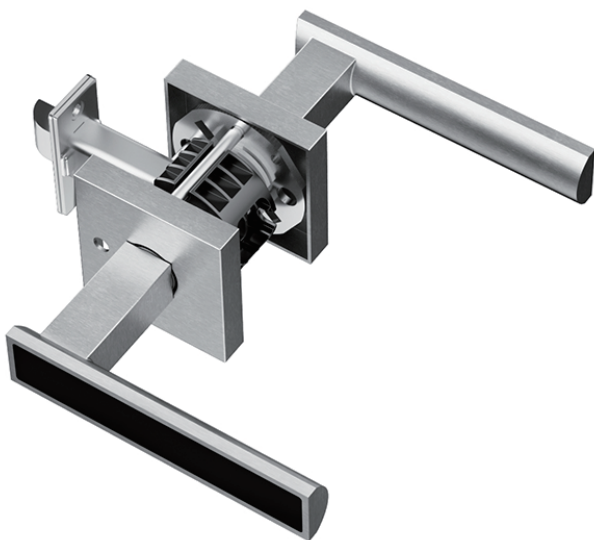


Features

- Anti-bacterial material SS316
- Non-handed
- Aesthetic lever design
- Easy to install
- Passage and Privacy function options

| | |
|-----------------|--|
| Part No.# | AL-02 |
| Material | SS316 |
| Finishes | Available in standard architectural finishes |
| Backset Depth | 2 3/8" - 2 3/4" |
| Door Thickness | 1 3/8" - 1 3/4" |
| Handing | Non-handed |
| Latchbolt Throw | 1/2" |
| Number of Keys | 0 |
| Strike Type | T-Strike Curved Lip |
| UL Listed | Yes |

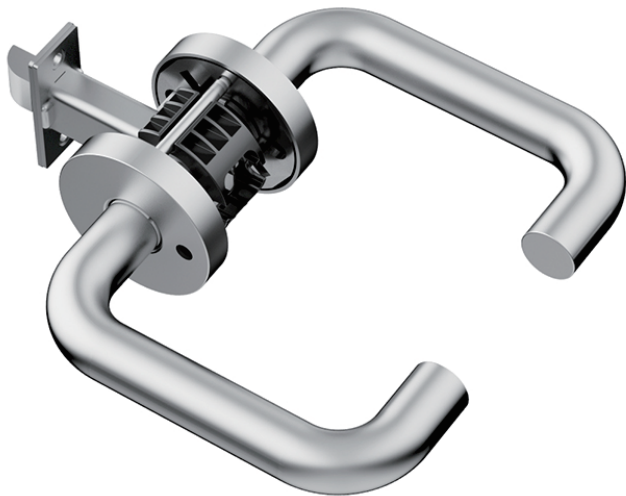
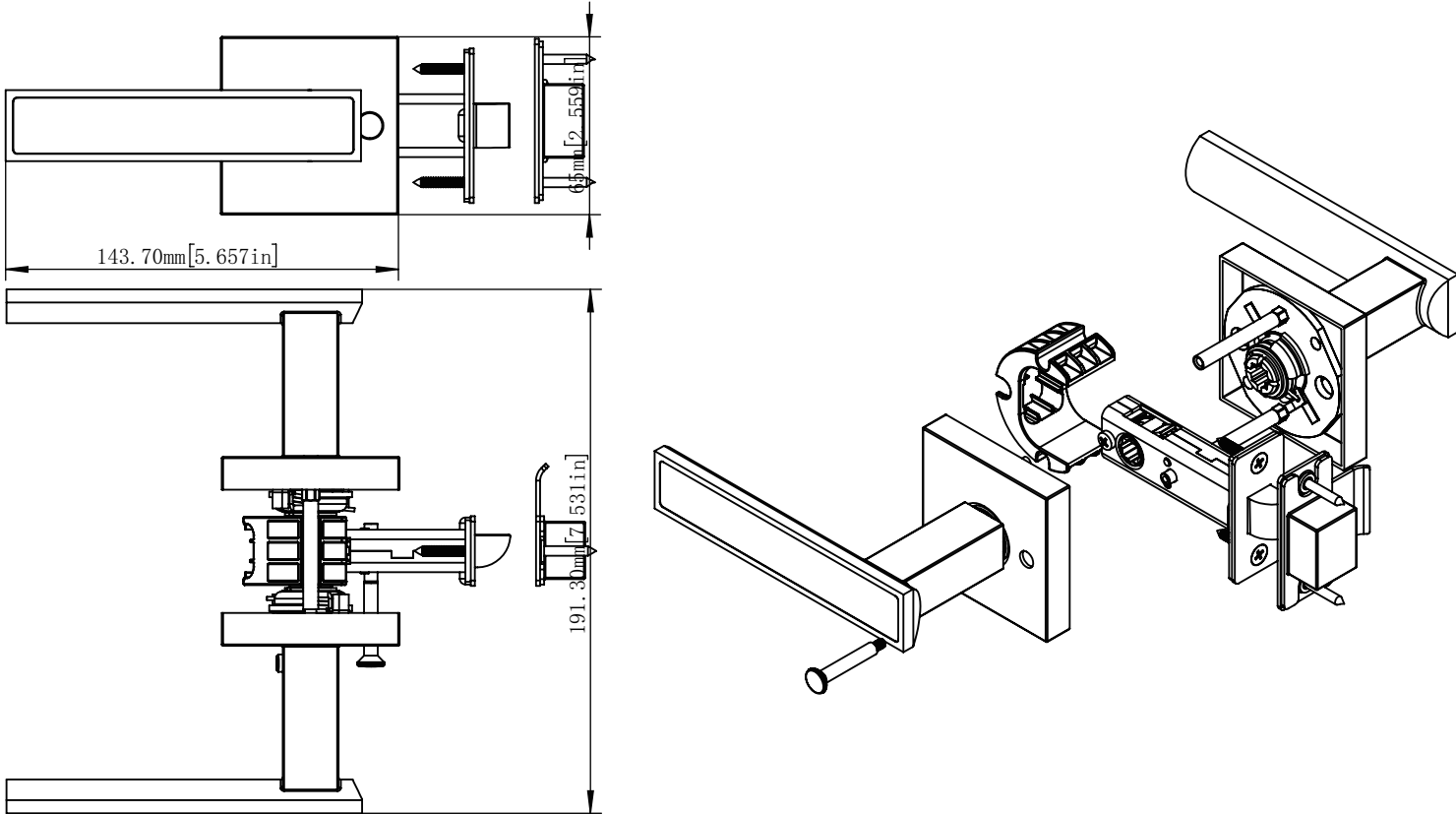




Features

- Anti-bacterial material SS316
- Non-handed
- Aesthetic lever design
- Easy to install
- Passage and Privacy function options

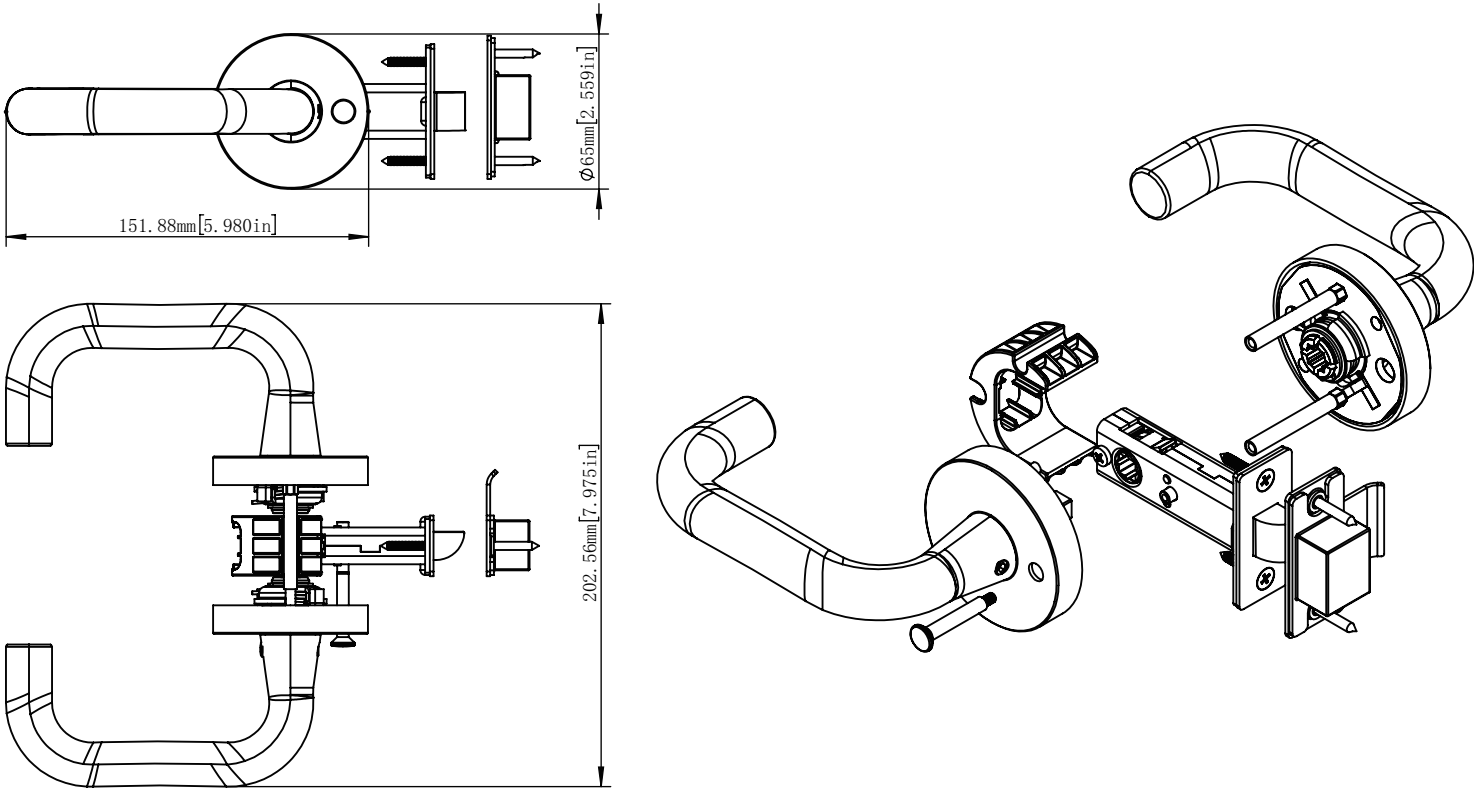
| | |
|-----------------|--|
| Part No.# | AL-03 |
| Material | SS316 |
| Finishes | Available in standard architectural finishes |
| Backset Depth | 2 3/8" - 2 3/4" |
| Door Thickness | 1 3/8" - 1 3/4" |
| Handing | Non-handed |
| Latchbolt Throw | 1/2" |
| Number of Keys | 0 |
| Strike Type | T-Strike Curved Lip |
| UL Listed | Yes |

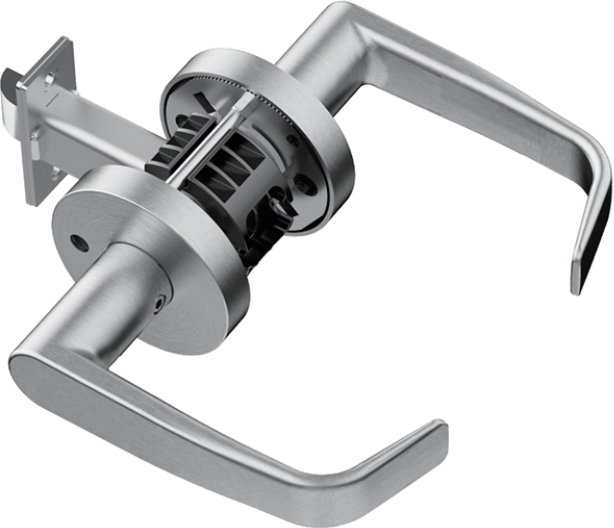


Features

- Anti-bacterial material SS316
- Non-handed
- "L" lever, solid
- Easy to install
- Passage and Privacy function options

| | |
|-----------------|--|
| Part No.# | AL-06 |
| Material | SS316 |
| Finishes | Available in standard architectural finishes |
| Backset Depth | 2 3/8" - 2 3/4" |
| Door Thickness | 1 3/8" - 1 3/4" |
| Handing | Non-handed |
| Latchbolt Throw | 1/2" |
| Number of Keys | 0 |
| Strike Type | T-Strike Curved Lip |
| UL Listed | Yes |

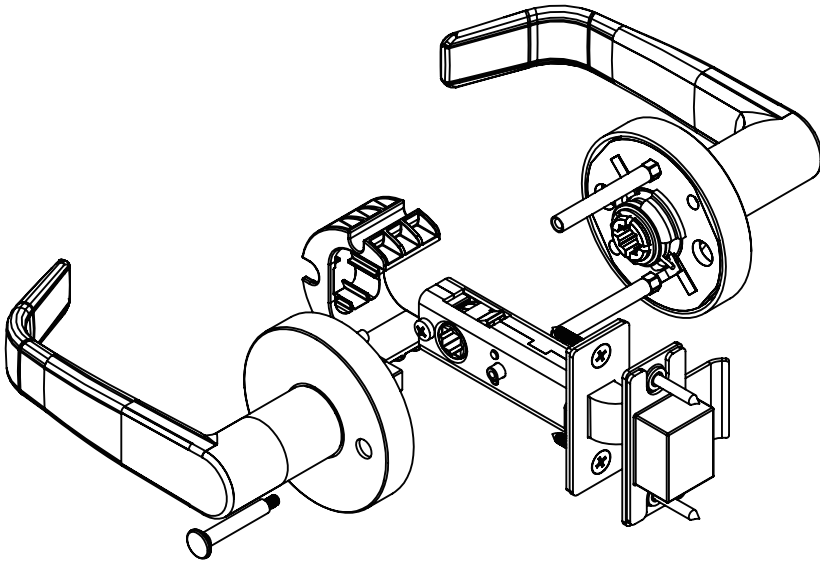
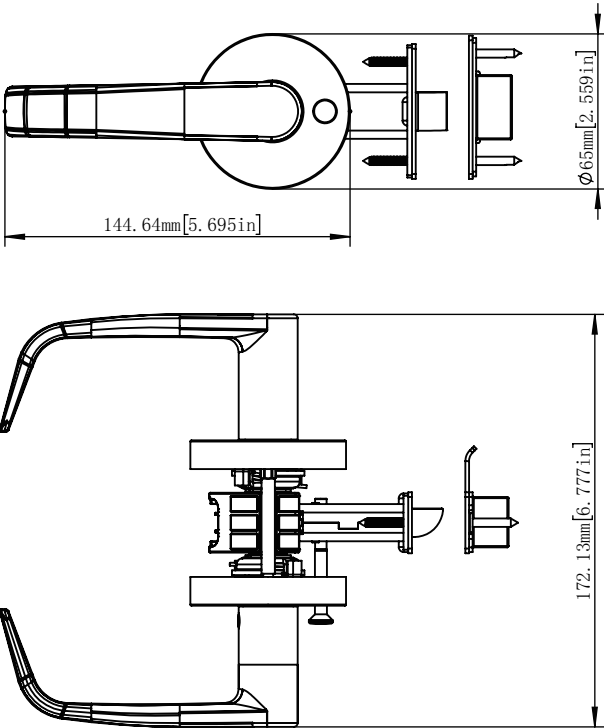




Features

- Anti-bacterial material SS316
- Non-handed
- "J" lever, solid
- Easy to install
- Passage and Privacy function options

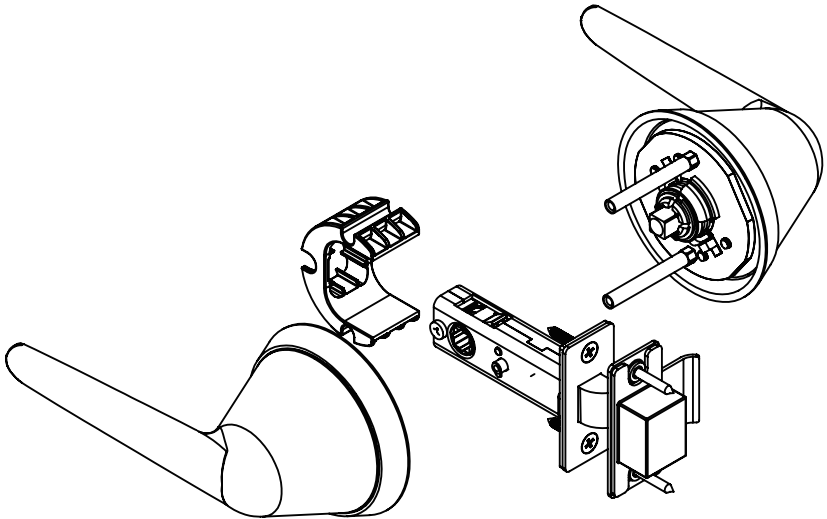
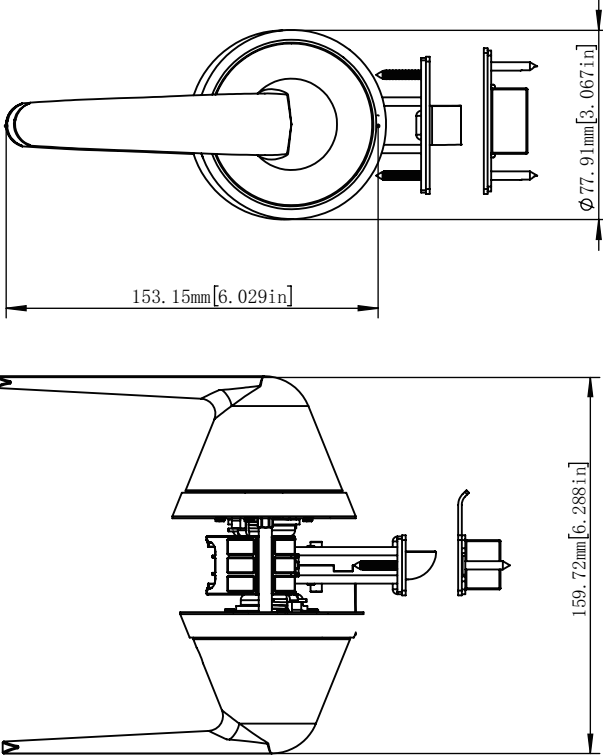
| | |
|-----------------|--|
| Part No.# | AL-07 |
| Material | SS316 |
| Finishes | Available in standard architectural finishes |
| Backset Depth | 2 3/8" - 2 3/4" |
| Door Thickness | 1 3/8" - 1 3/4" |
| Handing | Non-handed |
| Latchbolt Throw | 1/2" |
| Number of Keys | 0 |
| Strike Type | T-Strike Curved Lip |
| UL Listed | Yes |



Features

- Anti-bacterial material SS316
- Non-handed
- ADA compliant
- Unique design of sloping surfaces and overlapping rose & lever to address common safety concerns in behavioral health facilities
- Easy to install
- Passage and Privacy function options

| | |
|-----------------|--|
| Part No.# | AL-04 |
| Material | SS316 |
| Finishes | Available in standard architectural finishes |
| Backset Depth | 2 3/8" - 2 3/4" |
| Door Thickness | 1 3/8" - 1 3/4" |
| Handing | Non-handed |
| Latchbolt Throw | 1/2" |
| Number of Keys | 0 |
| Strike Type | T-Strike Curved Lip |
| UL Listed | Yes |

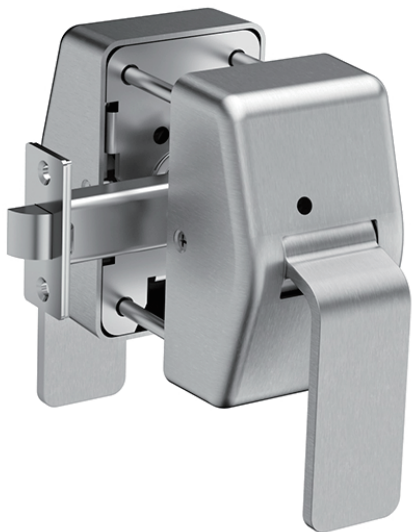
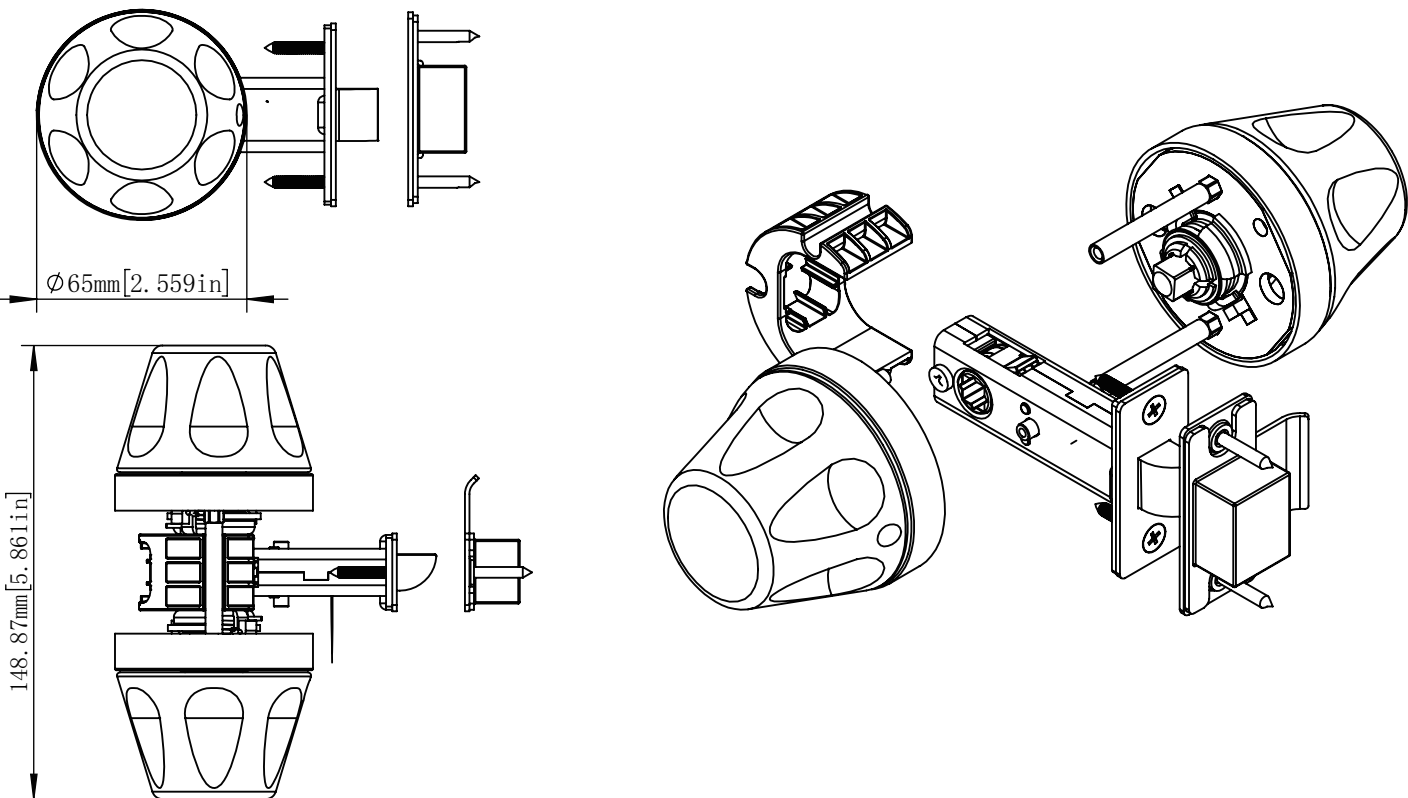




Features

- Anti-bacterial material SS316
- ADA compliant
- Non-handed
- The anti-harm knob features recessed finger holes for a better grip
- Overlapping knob and rose construction with sloped surfaces throughout
- Concealed mounting screws for added security
- Easy to install
- Passage and Privacy function options

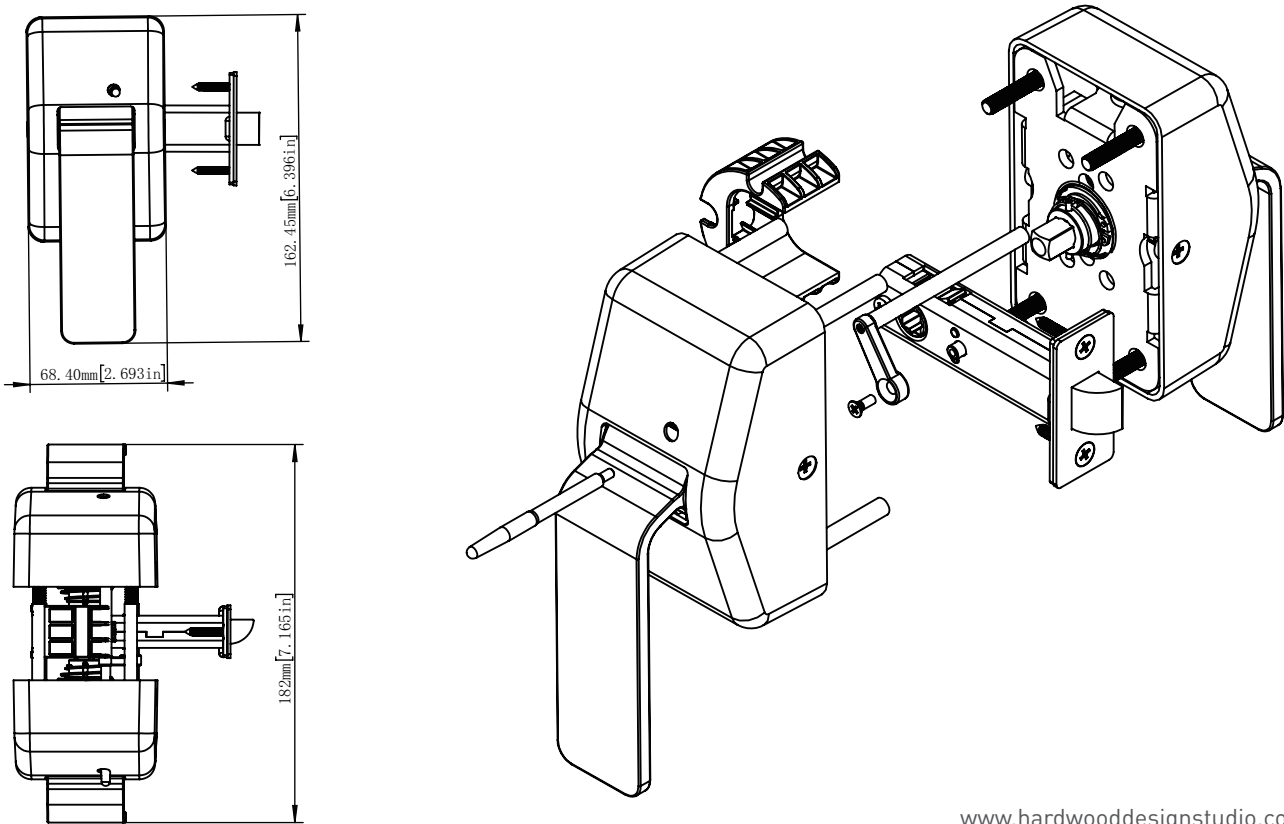
| | |
|-----------------|--|
| Part No.# | AL-05 |
| Material | SS316 |
| Finishes | Available in standard architectural finishes |
| Backset Depth | 2 3/8" - 2 3/4" |
| Door Thickness | 1 3/8" - 1 3/4" |
| Handing | Non-handed |
| Latchbolt Throw | 1/2" |
| Number of Keys | 0 |
| Strike Type | T-Strike Curved Lip |
| UL Listed | Yes |



Features

- Anti-bacterial material SS316
- ADA complaint
- Paddle trim orientation can be mounted in vertical and horizontal positions as a standard product
- Handing is easily field reversible
- Easy to install
- Passage function only

| | |
|-----------------|--|
| Part No.# | AL-08 |
| Material | SS316 |
| Finishes | Available in standard architectural finishes |
| Backset Depth | 2 3/8" - 2 3/4" |
| Door Thickness | 1 3/8" - 1 3/4" |
| Handing | Handed |
| Latchbolt Throw | 1/2" |
| Number of Keys | 0 |
| Strike Type | T-Strike Curved Lip |
| UL Listed | Yes |

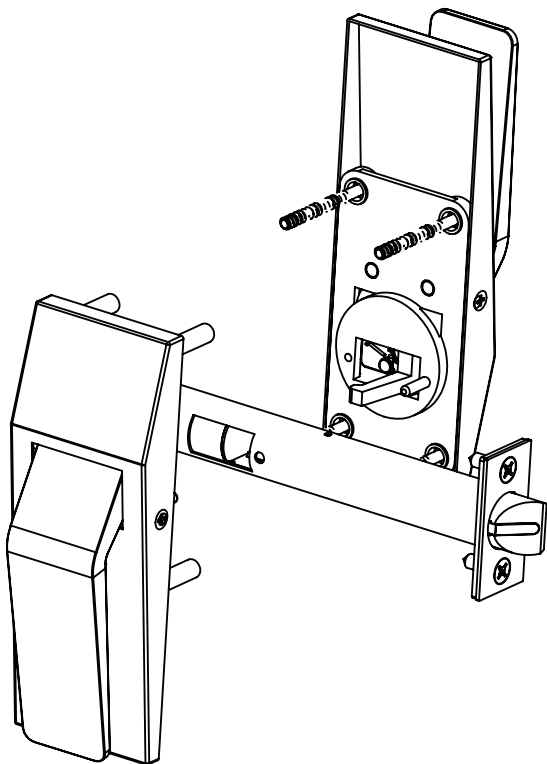
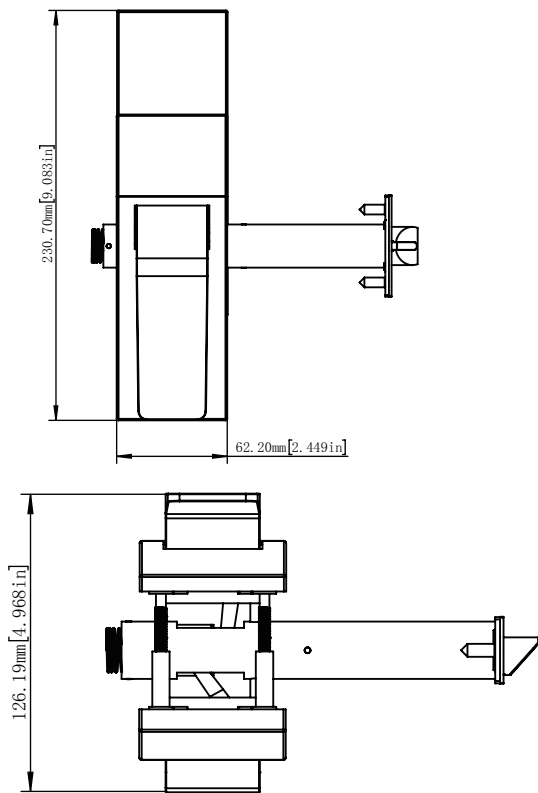




Features

- Anti-bacterial material SS316
- Push/Pull operation is ideal for hands free use
- Tapered design minimizes catch points
- Easy to install
- Passage function only

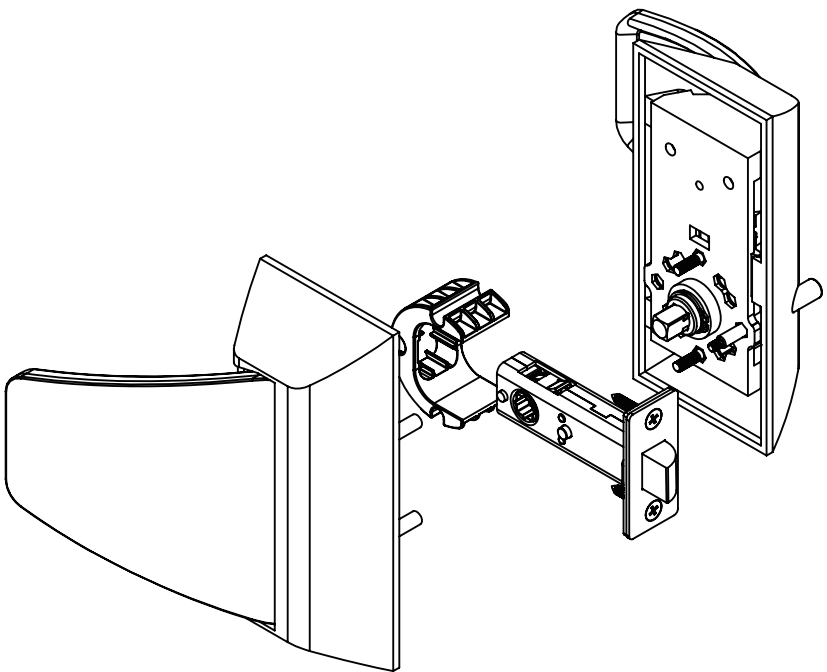
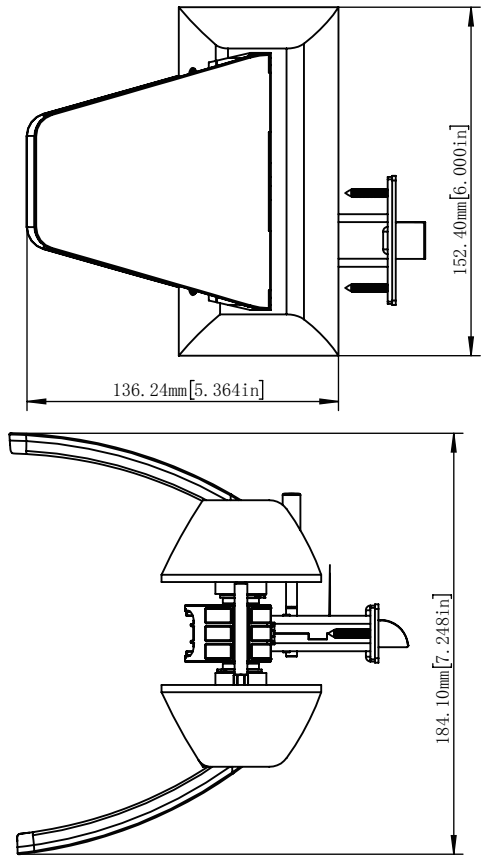
| | |
|-----------------|--|
| Part No.# | AL-09 |
| Material | SS316 |
| Finishes | Available in standard architectural finishes |
| Backset Depth | 2 3/8" - 2 3/4" |
| Door Thickness | 1 3/8" - 1 3/4" |
| Handing | Handed |
| Latchbolt Throw | 1/2" |
| Number of Keys | 0 |
| Strike Type | T-Strike Curved Lip |
| UL Listed | Yes |



Features

- Anti-bacterial material SS316
- ADA complaint
- non-handed with multiple mounting orientations allow customized openings
- Easy to install
- Passage and Privacy function options

| | |
|-----------------|--|
| Part No.# | AL-10 |
| Material | SS316 |
| Finishes | Available in standard architectural finishes |
| Backset Depth | 2 3/8" - 2 3/4" |
| Door Thickness | 1 3/8" - 1 3/4" |
| Handing | Handed |
| Latchbolt Throw | 1/2" |
| Number of Keys | 0 |
| Strike Type | T-Strike Curved Lip |
| UL Listed | Yes |

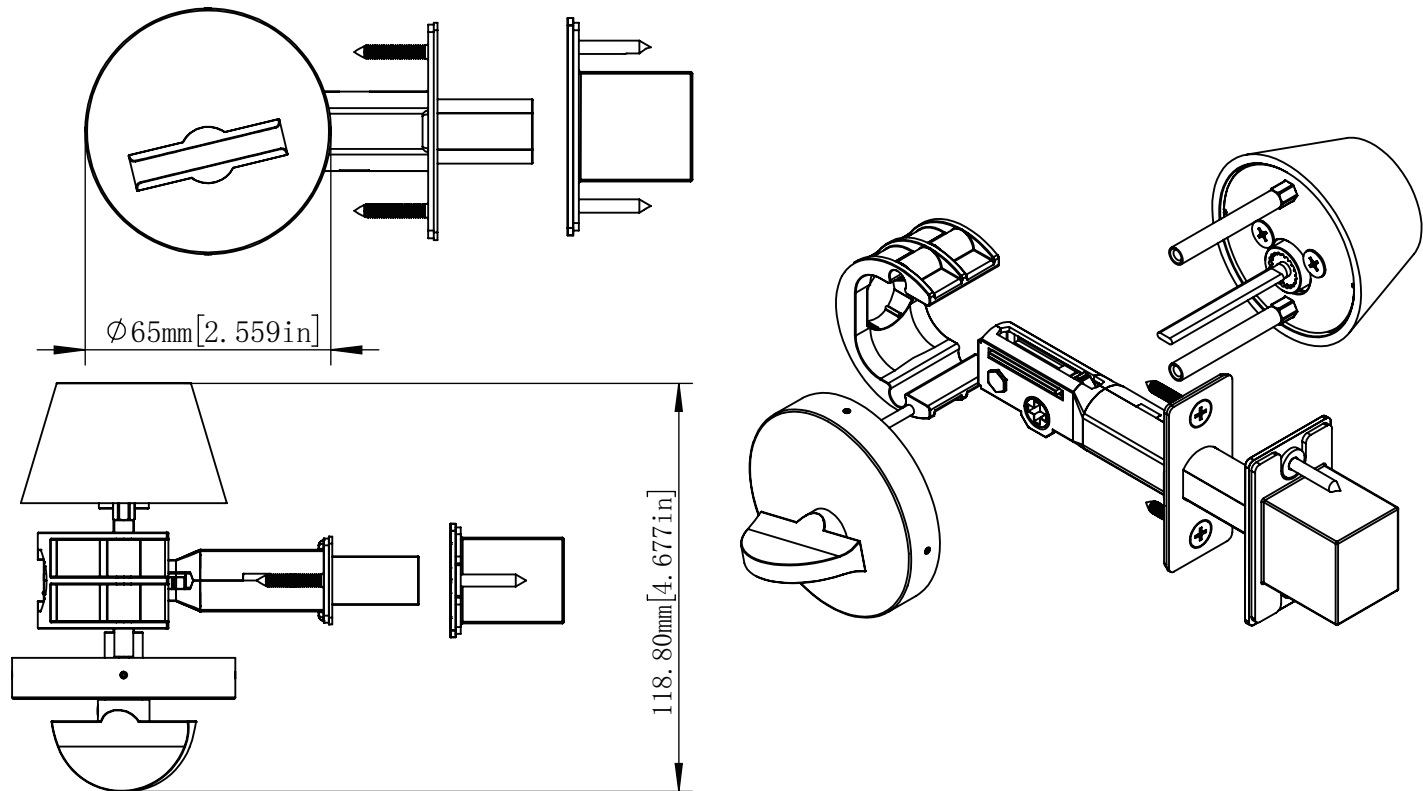




Features

- Anti-bacterial material SS316
- Non-handed
- Key outside operates deadbolt
- Thumb turn inside operates deadbolt
- Easy to install
- Entrance function

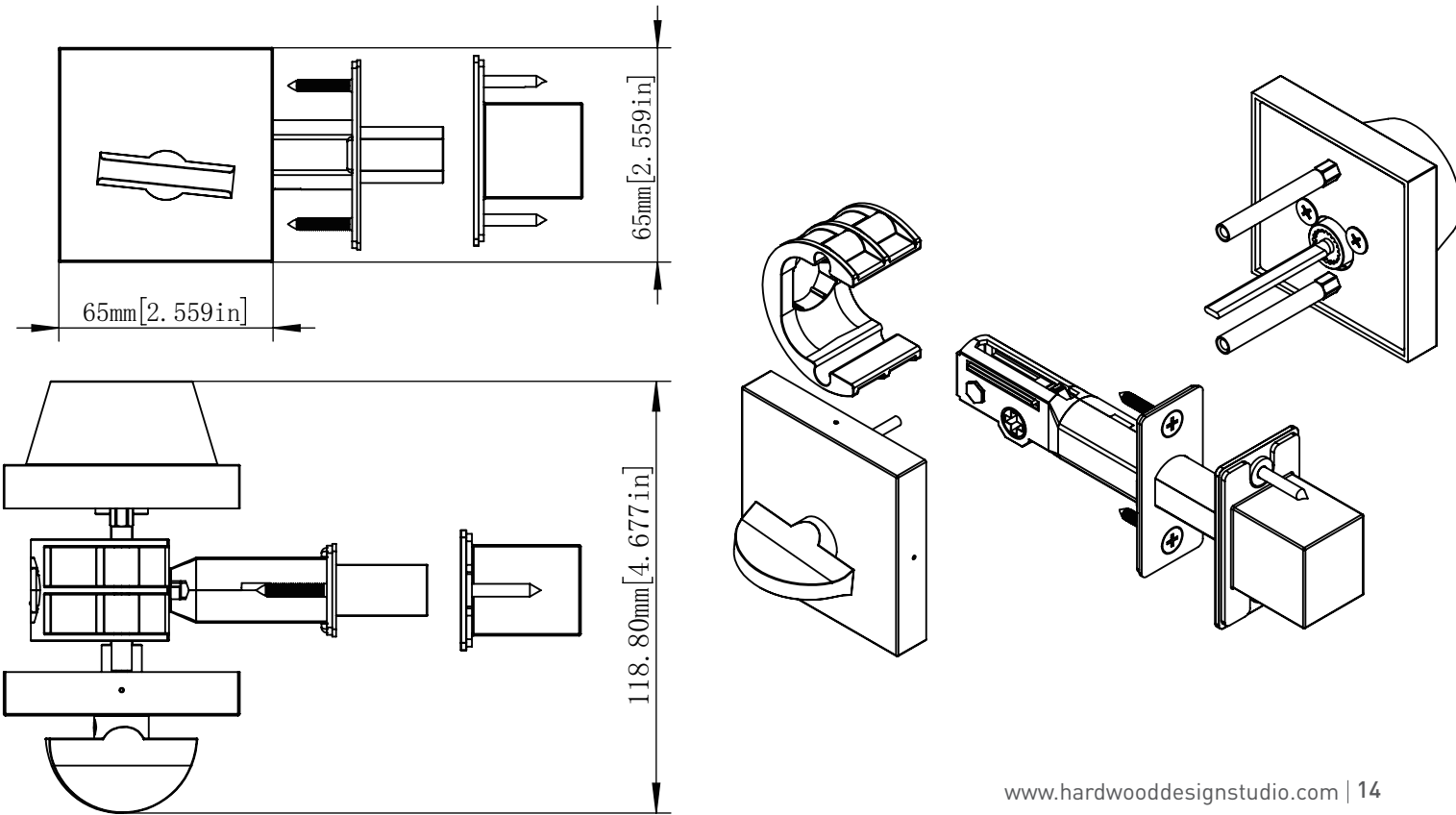
| | |
|-----------------|--|
| Part No.# | AL-D01 |
| Material | SS316 |
| Finishes | Available in standard architectural finishes |
| Backset Depth | 2 3/8" - 2 3/4" |
| Door Thickness | 1 3/8" - 1 3/4" |
| Handing | Non-handed |
| Latchbolt Throw | 1" |
| Number of Keys | 2 |
| Strike Type | Flat |
| UL Listed | Yes |



Features

- Anti-bacterial material SS316
- Non-handed
- Square rose design
- Key outside operates deadbolt
- Thumb turn inside operates deadbolt
- Easy to install
- Entrance function

| | |
|-----------------|--|
| Part No.# | AL-D02 |
| Material | SS316 |
| Finishes | Available in standard architectural finishes |
| Backset Depth | 2 3/8" - 2 3/4" |
| Door Thickness | 1 3/8" - 1 3/4" |
| Handing | Non-handed |
| Latchbolt Throw | 1" |
| Number of Keys | 2 |
| Strike Type | Flat |
| UL Listed | Yes |

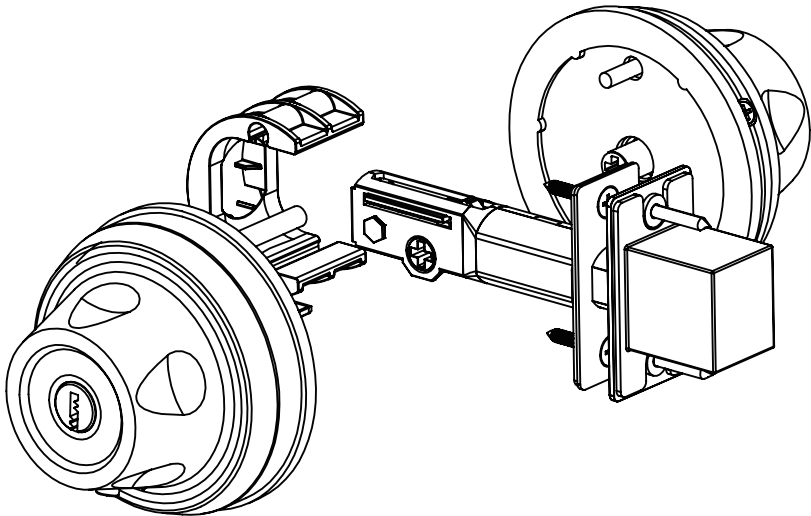
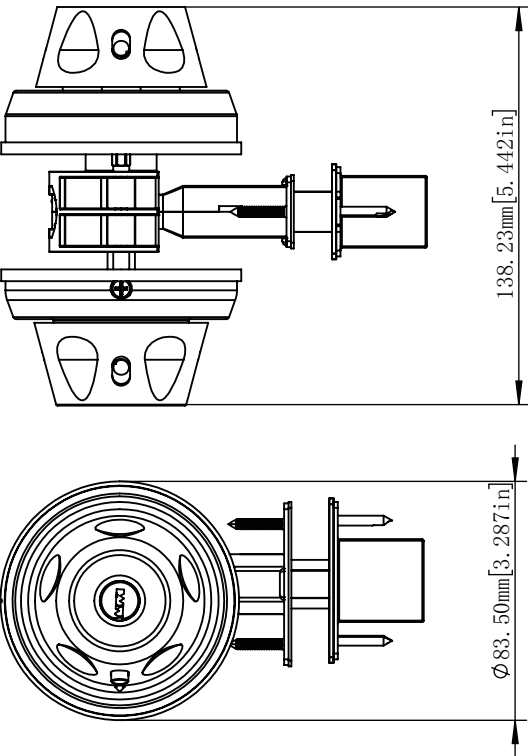




Features

- Anti-bacterial material SS316
- Non-handed
- Key outside operates deadbolt
- Knob outside throws deadbolt only
- Knob inside operates deadbolt
- Easy to install
- Passage and Privacy function options

| | |
|-----------------|--|
| Part No.# | TL-00 |
| Material | SS316 |
| Finishes | Available in standard architectural finishes |
| Backset Depth | 2 3/8" - 2 3/4" |
| Door Thickness | 1 3/8" - 1 3/4" |
| Handing | Non-handed |
| Latchbolt Throw | 1" |
| Number of Keys | 2 |
| Strike Type | Flat |
| UL Listed | Yes |

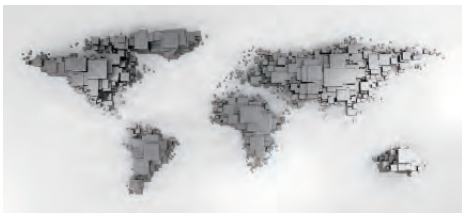


COMPANY PROFILE

Your most trusted partner



30 years
Experience



Hardwood is an innovative and professional company engaged in research, development, design and manufacturing of Locksets, fittings, sliding door system and numerous architectural hardware. The founder and core members have over 30 years' experience in door control industry. Our vision is to be the expert on functional and decorative security products and accessories. We believe true value can only be created by continuous dedication. Hardwood aims always to be your most reliable partner in supplying locksets and architectural hardware.

DESIGN & DEVELOPMENT

Continuous innovation and continuous development

Hardwood management team recognizes and deeply understand innovation and continuous improvement are key driven force for the company. We keep investing in R&D activities and have clearly defined growing annual budget for it. Engineers are using modern software, such as Solidworks and Creo to design internal structure and esthetic appearance.

We keep following new trends, products and techniques in the door control industry. Every quarter Hardwood has regular seminar on new products / trends and each year we set a plan to launch numerous new products.



PRODUCTION & INSPECTION EQUIPMENT

Quality production, strict quality control



Not only we invest heavily in R&D activities but Hardwood also deeply understand design should be perfectly matched with most advanced manufacturing techniques. We design critical parts toolings fully in house and we have invested such as AgieCharmilles machining centers. To control the quality of the manufacturing parts Hardwood also invests CMM and other projector measurement devices to inspect and verify critical tolerances. We understand the creativity sparked by R&D staff plus over years' experience in manufacturing will contribute to the novelty, quality and cost effectiveness of our product.



CERTIFICATE

Your most trusted partner

The factory manufacturing is under ISO 9001 quality management system. Numerous products have passed UL certification.





CASE PRESENTATION

Your most trusted partner

Our products are widely used in hospitals, schools, business centers, airports, government agencies, hotels, libraries, art galleries, bathrooms, dormitories, bedrooms, and so on

- Ningbo Wisdom Garden
- Hangzhou Bay New Zone
- Zhejiang Cargo Warehouse
- Zhejiang Women And Children Hospital

- Zhejiang Medical University
- Ningbo Zhenhai District Library
- Zhejiang Btower Commercial Center
- Zhejiang Liangzhu Art Museum

